



Table Of Contents

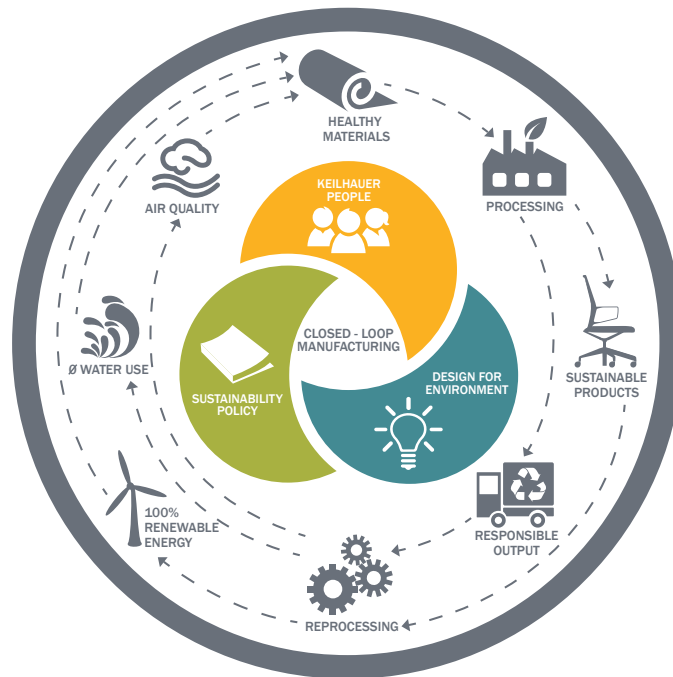
Planet Keilhauer Overview..... 2
Sip Tables Life Cycle..... 3
Environmental Standards & Credit Applicability..... 5
Materials & Recycled Content..... 7

Planet Keilhauer Overview

As part of our commitment to transparency and disclosure, Keilhauer is proud to present our Product Environmental Criteria documents. These documents will provide information on our corporate sustainability goals as well as specific environmental information about our products. For information not found in this document please visit our website or contact your local sales representative.

We believe that good business and long term success is measured by the Triple Bottom Line, meaning we harmoniously look after our people, our environment and our economic success. We introduced a comprehensive sustainability program called Planet Keilhauer so that sustainability would be prioritized throughout our company.

Planet Keilhauer is driven by its Corporate Goal of closed loop manufacturing. We are guided by our sustainability policy, occupied by our sustainability programs, and supported by our people.



We'll know we have a closed loop system when:

- We can disassemble, reuse, recycle, or biodegrade our products.
- We use 100% recycled content or rapidly renewable materials.
- We are powered by 100% renewable energy.
- We use materials with 0 impact on humans and the environment.
- We create 0 waste in our facilities.
- We use 0 water in our processes.

Keilhauer Environmental Certifications

Keilhauer is proud to have many of our products certified under the following certification (see Life Cycle Section for product applicability):



BIFMA LEVEL®

Keilhauer products have been certified by SCS Global Services for LEVEL®, BIFMA's sustainability certification program for furniture.



Indoor Air Quality

Many Keilhauer products have been certified by SCS Global Services for Indoor Air Quality achieving Indoor Advantage™ Gold. This means they meet rigorous and comprehensive air quality standards.



FSC® Forest Stewardship Council®

We believe in responsible forestry and ethically sourced materials. In August 2014, we launched our first line of tables as FSC Certified. We are currently expanding this program to include other product lines.



Cradle to Cradle Certified™

Cradle to Cradle is a multi-attribute certification assessing products against stringent human and environmental health criteria. Keilhauer's Simple Chair 9323 is Cradle to Cradle Certified™ at the Silver level.

Sip Tables Life Cycle

1. Design for Environment

Keilhauer's interdisciplinary Design for Environment Program (DfE) ensures that we design our products in line with our sustainability goals. This includes holistic life cycle thinking, material specification and sourcing so that we create exceptionally well designed and safe products with long, useful lives that are repairable and recyclable. Members of the DfE team include managers from Manufacturing, Engineering, Operations, Sustainability, and even our President!

2. Sip Tables Certification

Sip tables are certified under the following industry standard certification:



3. Environmental Standards

Keilhauer products may assist in achieving credits under the following industry standards and certifications:

WELL Building Standard

Keilhauer products may be applied to the three WELL project typologies:

- New and Existing Buildings
- New and Existing Interiors
- Core and Shell

For more credit specific details, see WELL Building Standard Credit Applicability on page 5.

LEED v4

Keilhauer products may assist with the following LEED Projects. For more credit specific details, see LEED v4 Credit Applicability on pages 5 and 6 or visit <http://keilhauer.ecoscorecard.com>.



Building Design
+ Construction



Interior Design
+ Construction



Building Operations
+ Maintenance

Applicable credits can be found in the following sections:

- Materials and Resources Credits
- Indoor Environmental Quality
- Pilot Credits

Healthier Hospitals for Safer Chemicals Challenge - V2.0

Keilhauer products may comply with this standard. Please contact your local sales representative for more information.

4. Supply Chain

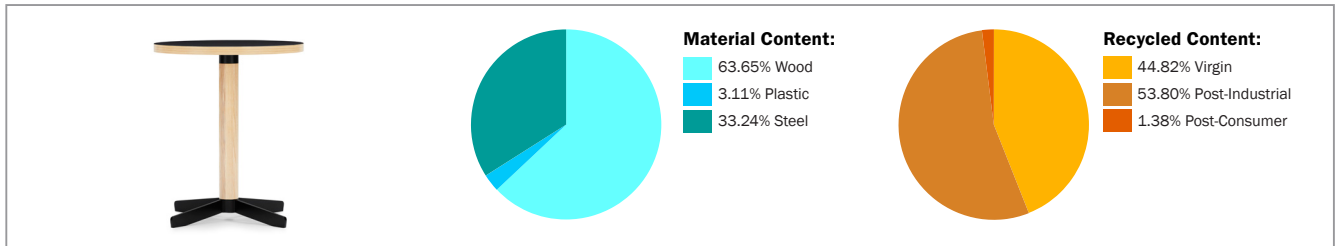
We have always believed that who you do business with is fundamental to how you do business. We work with vendors that conduct business honestly and ethically, giving priority to local vendors. We also work with vendors to include recycled materials and to source raw materials from sustainable sources.

5. Materials & Recycled Content

Our products are made from a variety of materials, some of which are made using recycled content. See below for percentages from our best seller. For other models please reference the chart at the end of the document.

Note: Recycled content is determined by weight. Products may contain both pre-consumer and post-consumer recycled content materials. Post-industrial (pre-consumer) recycled content is material diverted from the waste stream during manufacturing. Post-consumer recycled content is material generated by end users such as households, commercial, or consumers of the final product.

Best seller: Sip 68952, Round end table - High



6. Manufacturing Plant

To target efficiency, we measure our resource use and perform regular audits. Using the data generated, we can evaluate our processes such as energy and water use and shift our capital investments to align with our sustainability goals.

7. Final Manufacturing Location

Keilhauer products are manufactured in Toronto, Ontario, Canada.



8. Blanket Wrapping

When shipping seating, Keilhauer's standard is to cover products in a recyclable plastic bag (made using recycled content), and then wrap in a reusable blanket. The blanket is taken back by the shipper at delivery. Alternatively, products can be shipped in recyclable cardboard boxes. Depending on the model, some tables are packed in wooden crates.

9. End of Product Life

For information on reparability and recyclability see 'End of Product Life Document: Tables' located on our website: www.keilhauer.com.

Environmental Standards & Credit Applicability

Keilhauer products may assist with the following features and credits:

WELL Building Standard Credit Applicability

Air Concept

FEATURE: 28 Cleanable Environment (1: Material Properties)

Keilhauer tabletops and some seating are considered high touch, non-porous surfaces. These products are made with exceptional quality, are smooth and free of defects visible to the unaided eye, finished to maintain smooth welds and joints and free of sharp internal angles, corners and crevices.

LEED v4 Credit Applicability (LEED 2009 Credits)

LEED BD+C Building Design + Construction

Materials and Resources (MR) Credits:

PREREQ: Construction and Demolition Waste Management Planning (LEED 2009: MRc2)

When shipping, Keilhauer covers seating in a recyclable plastic bag (made using recycled content) which is then wrapped with a protective reusable blanket. The blanket is taken back by the shipper at delivery. Alternatively, products can be shipped in recyclable cardboard boxes. Depending on the model, some Keilhauer tables are shipped in wooden crates. See page 4 for End of Product Life details.

CREDIT: Building Product Disclosure and Optimization - Sourcing of Raw Materials (LEED 2009: MRc6, MRc7) (Option 2. Leadership Extraction Practices)

Materials Reuse: Keilhauer products are designed for durability and offer a long useful life with a ten year warranty. Some products may be refurbished and reused to contribute to this point on future projects.

Recycled Content: The majority of Keilhauer products contain some recycled content and may assist in contributing to this credit. Reference the chart on page 7 for model specific recycled content percentages.

CREDIT: Furniture and Medical Furnishings (LEED 2009: MRc5) (Option 3. Multi-Attribute Assessment of Products)

Materials Reuse: Keilhauer products are designed for durability and offer a long useful life with a ten year warranty. Some products may be refurbished and reused to contribute to this point on future projects.

Recycled Content: The majority of Keilhauer products contains some recycled content and may assist in contributing to this credit. Reference the chart on page 7 for model specific recycled content percentages.

LEED ID+C Interior Design + Construction

Materials and Resources (MR) Credits:

PREREQ: Construction and Demolition Waste Management Planning (LEED 2009: MRc2)

When shipping, Keilhauer covers seating in a recyclable plastic bag (made using recycled content) which is then wrapped with a protective reusable blanket. The blanket is taken back by the shipper at delivery. Alternatively, products can be shipped in recyclable cardboard boxes. Depending on the model, some Keilhauer tables are shipped in wooden crates. See page 4 for End of Product Life details.

CREDIT: Interiors Life Cycle Impact Reduction (LEED 2009: MRc1.2, MRc3.1, MRc3.2)

Keilhauer products are designed for durability and offer a long useful life with a ten year warranty. Some product may be refurbished and reused to contribute to this point on future projects.

CREDIT: Building Product Disclosure and Optimization - Sourcing of Raw Materials (LEED 2009: MRc6, MRc7) (Option 2. Leadership Extraction Practices)

Materials Reuse: Keilhauer products are designed for durability and offer a long useful life with a ten year warranty. Some products may be refurbished and reused to contribute to this point on future projects.

Recycled Content: The majority of Keilhauer products contain recycled content and may assist in contributing to this credit. Reference the chart on page 7 for model specific recycled content percentages.

LEED BO+M Building Operations + Maintenance

Materials and Resources (MR) Credits:

CREDIT: Purchasing: Facility Maintenance and Renovation (LEED 2009: MRc2.2, MRc3) (Option 2. Furniture)

Materials Reuse: Keilhauer products are designed for durability and offer a long useful life with a ten year warranty. Some products may be refurbished and reused to contribute to this point on future projects.

Recycled Content: The majority of Keilhauer products contain recycled content and may assist in contributing to this credit. Reference the chart on page 7 for model specific recycled content percentages.

LEED Pilot Credit (PC)

BD+C: Building Design + Construction, ID+C: Interior Design + Construction

PC 112: Certified Multi-Attribute Products and Materials

Keilhauer products are certified by SCS Global Services for BIFMA LEVEL 2 certification. The registration number is located in the Life Cycle section of this document. The certificate can be found on Keilhauer's website under the environment section.





PC 91: Social Equity Within the Supply Chain

Keilhauer suppliers are mandated to adhere to a Code of Conduct which addresses criteria including child and forced labor, health and safety, discrimination and human rights, discipline and harassment, fair working hours, and corruption.

PC 44: Ergonomics Approach for Computer Users

Keilhauer products are engineered to the highest ergonomic standards. In addition, many Keilhauer products meet ergonomic guidelines outlined in BIFMA G1-2013. Please refer to Keilhauer's website for more details.

Materials & Recycled Content

Product			Recycled Content			Material Content		
	MODEL #	DESCRIPTION	POST CONSUMER	POST INDUSTRIAL	TOTAL	WOOD	PLASTIC	STEEL
	SIP 68951	ROUND END TABLE - LOW	1.42%	55.24%	56.66%	62.69%	3.19%	34.13%
	SIP 68952	ROUND END TABLE - HIGH	1.38%	53.80%	55.18%	63.65%	3.11%	33.24%
	SIP 68953	ROUND CONVERSION TABLE	1.30%	48.78%	50.08%	57.40%	2.67%	39.93%
	SIP 68964	RECTANGLE COFFEE TABLE	0.45%	50.59%	51.04%	56.72%	0.07%	43.22%

Document Disclaimer:

This document will be reviewed and updated periodically and is subject to change without notice. Keilhauer is not responsible for slight deviations in the data and information contained in this document.

Recycled content data is calculated using data from suppliers, manufacturers and industry averages. Keilhauer makes conservative assumptions to ensure disclosure of the most accurate recycled content as possible. Variability of manufacturing processes may result in higher or lower content. Textiles and associated weights are not accounted for in the analysis. Recycled content and material content data is calculated using base models only.

Cradle to Cradle Certified is a certification mark licensed exclusively for the Cradle to Cradle Products Innovation Institute.